

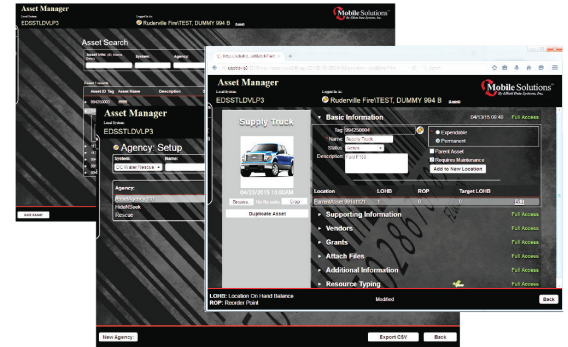
Asset Manager

Identifying your assets and tracking their usage just got easier!

Asset Manager is a software solution designed to manage and track assets such as equipment, supplies, electronics, vehicles, etc. Any item that can be labeled with a barcode can be logged into the Asset Manager software and assigned to a department, agency, or any kind of group. With Asset Manager, you can quickly and easily generate reports detailing who has used or is currently using any asset and view inventory details.


Asset Manager Basics

Asset Manager software is comprised of two basic components - Asset Client & Asset Server. Both elements provide certain functionality that support different user capabilities. Asset Manager Systems can be configured to best suit the needs of each organization.




Asset Manager Features

- > Label assets with barcoded asset tags.
- > Assign assets to people.
- > Associate assets using a parent/child category relationship.
- > Link documents to assets such as POs and invoices.
- > Synchronize and share data with many Command Centers.
- > An interoperable system allowing other credentials to be integrated at an event.
- > Schedule and track maintenance on vehicles and equipment.
- > Generate asset reports for accountability.
- > Attach documents to assets and meet the needs of NFPA 1851 and 1852.
- > Track products by department, grant and purchase date.
- > NIMS resource typing included.
- > Issue asset tags by:
 - Using Asset Manager & label printer.
 - Purchase preprinted tags.
 - Add a machine readable tag currently on the asset into the Asset Manager System.
- > Create a second record using Duplicate Asset button.



Asset Server



- > Web application accessed via a web browser or locally installed.
- > Maintain a centralized database.
- > Upload photos.
- > Manage asset data among multiple departments (Create, edit, or archive records).
- > Control access settings for each user.



Asset Client



- > Software installed locally on PC.
- > Capture photos.
- > Connect to USB peripherals (scanners, ID printers, cameras, etc.).
- > Print asset labels centrally or locally.

Each component can be used as a stand-alone solution or can be combined in a number of possible configurations. Asset Manager is designed to provide users the ability to manage asset data and assign assets to personnel by checking items in/out using a locally installed system or from any location using an internet browser. This provides a cost efficient umbrella solution by managing multiple locations using one solution that supports one centralized database.



Companion Products

The Asset Manager software can be integrated with other hardware and software products to enhance the solution and build a more comprehensive system resulting in greater effectiveness and success when managing assets.



Mobile Command Cases

The Mobile Command Case is a turn-key, integrated solution packaged as a compact, self contained workstation. This case is designed to quickly be transported and setup with little to no preparation.

- Available as a standard or mini command case.
- Protected by a durable, water tight mobile case.
- Track people away from the command workstation.



Easily transport to multiple locations with little to no preparation!

Mobile Tracking Devices

- Track assets away from the command workstation.
- Wirelessly connect to the command workstation by transmitting data in real-time.
- Add multiple applications to each device.
- Search an asset database.



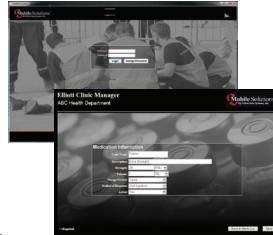
Stationary Tracking Devices

- Use multiple interfaces.
- Capture data stored on a 1- or 2-D barcode RFID or magstripe ID.
- Constant focus for unattended scanning (hands-free intellistand).



Emergency Event Manager & Elliott Clinic Manager Solution

- Enroll patients on-site.
- Dispense medication and supplies.
- Choose from multiple card designs.
- Know who is and is not on-site.
- Instantly issue positive ID on-site.
- Provide a dynamic medical questionnaire.
- Generate accurate reports quickly for federal reimbursement.



ID Badging System

- Multiple security features to choose from.
- Increased durability with virtual edge-to-edge laminates.
- Instantly issue quality IDs within minutes.
- Include color photos, logos & background images on IDs.
- Theft-deterrent software and hardware lock system.



Contact Elliott Data Systems, Inc. for more information or a free demonstration.

1-888-345-8511

www.elliottmobilesolutions.com



LegendID.com
425-251-1670 • 866-371-1670
sales@LegendID.com

Minimum Requirements

- CPU CORE 2DUO 2.0 GHZ w/AMB Cache
- Windows 7 64 Bit or Windows 7 Pro 32 bit
- 10/100 network card
- SQL 2008 R2 Express
- 2 GB Ram
- Minimum Browser IE9
- 20 GB free hard drive space
- Adobe Reader (free version)
- 4 USB 2.0 Port
- Clean power

Optional Accessories

- SmartReg
- Tethered scanner
- Stationary reader
- Handheld devices
- Asset tag printer
- Capture solutions